



COMPANY PROFILE



DESIGN



MANUFACTURING



DELIVERY

CMAlifts, ABOUT US

CMAlifts' Headquarters, Corato (BARI) – Italy

CMAlifts was founded in January 2001, further to an ambitious idea by the brothers Messrs Giulio and Gaetano Caputo, with a mission centred on the model of an industrial company with a craftsman's heart, which manufactures homelifts, passenger lifts and elevators for civil and industrial use, focusing on customer care, product quality, personnel safety, and environmental safeguard. More than 20 years after its foundation, CMAlifts is today leader in Italy in the vertical transport industry, operating in full compliance with the standards for occupational health and safety management systems, having acquired the ISO 45001 certification, in addition to ISO 9001 for quality management and ISO 14001 for environmental management systems.

Moreover, FEBO electric and MERCURY oil-hydraulic homelifts are provided with the EC Type Examination Certificate, and the processing of structural steel components is certified by the Factory Production Control Certificate of Conformity. The market in which the company operates has expanded over the years to such an extent that it has required an adequate production capacity to meet demand. This expansion has recently materialised with the inauguration of the ultra-modern headquarters, where every area of work finds its own space.

In order to meet the growing demand, CMAlifts is represented in Italy, as well as abroad, through its own representative offices.

CMAlifts has become an Industry 4.0 company thanks to the use of state-of-the-art machinery and a management system that allows all company processes to be interconnected.

This hi-tech change is certainly a virtuous evolution of its production system to the benefit of both productivity and customer satisfaction.

The constant increase in commercial orders coming from foreign markets, has been the result of a steady participation at international trade fairs and exhibitions. Today, CMAlifts has customers in Europe, Africa, Asia, and Oceania.

Craftsman in its heart, as well as in the creativity of its workforce, CMAlifts is a company that offers high-tech systems, focusing on the relationship with people, thus the solutions are shaped together with customers, with a working method that distinguishes each phase: order management, design, production, and on-site delivery by means of its own means of transport.





OUR SALES REPRESENTATIVE OFFICES

CMAlifts is active nationwide with its own representative offices, in Rome, Palermo and Settimo Milanese, as well as abroad, in Algeria, Poland and Senegal.

Milan

Sales Representative Office
Via A. Manzoni, 37
20019 - Settimo Milanese (MI) - Italy
Tel. +39 338 7196414
quotation@CMAlifts.com

Rome

Sales Representative Office
Via della Rustica, 131
00155 - Rome - Italy
Tel. +39 327 3056898
quotation@CMAlifts.com

Palermo

Sales Representative Office
Heron passage, 10
90040 - Isola delle Femmine (PA) - Italy
Tel. +39 331 2235114
quotation@CMAlifts.com

Algeria

Sales Representative Office
Algiers – Algeria
Cell. +39 3802192838
sales5@cmalifts.com

Poland

Sales Representative Office
Mr. Michal Lis
Ul. Klimasa 29/1
50-515 - Wroclaw - Poland
Mobile +48 512559447
cmapolska@cmalifts.com

Senegal

Sales Representative Office
Dakar Yoff- Senegal
Cell. +39 3802192838
sales5@cmalifts.com

CMAlifts, THE MARKET

CMAlifts is an international company operating across all continents through a network of sales agents, customers, or distributors. The growing urban development has generated the need for an increasingly sophisticated verticalization of cities, in terms of safety and environmental sustainability. In Europe, the new Safety Directive on lifts has regenerated a market in which CMAlifts' cutting-edge technology plays a key role in modernisations. The company is committed to the global market, fully meeting the demand for a product of superior quality and aesthetics, tailor-made to suit the customer.



Europe

- Italy
- Albania
- Austria
- Czech Republic
- Republic of San Marino
- Romania
- Croatia
- France
- Germany
- Malta
- Moldova
- Montenegro
- The Netherlands
- Poland
- United Kingdom
- Slovenia
- Switzerland
- Turkey
- Hungary

AFRICA

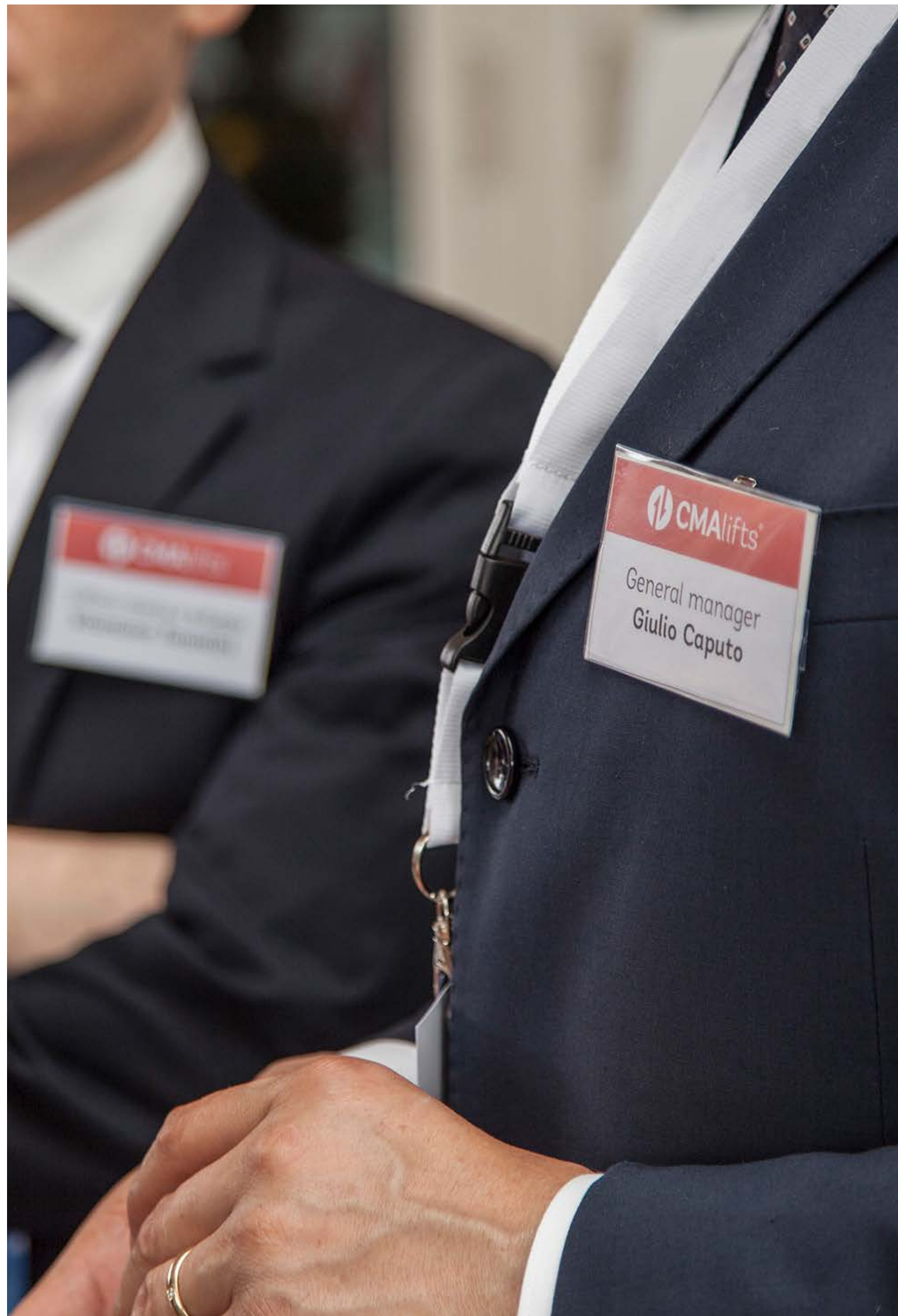
- Algeria
- Cameroon
- Egypt
- Niger
- Senegal

ASIA

- Saudi Arabia
- United Arab Emirates
- Jordan
- Iraq
- Israel
- Lebanon
- Qatar
- Singapore
- Syria
- Vietnam
- Kuwait

OCEANIA

- Australia



TRADE FAIRS

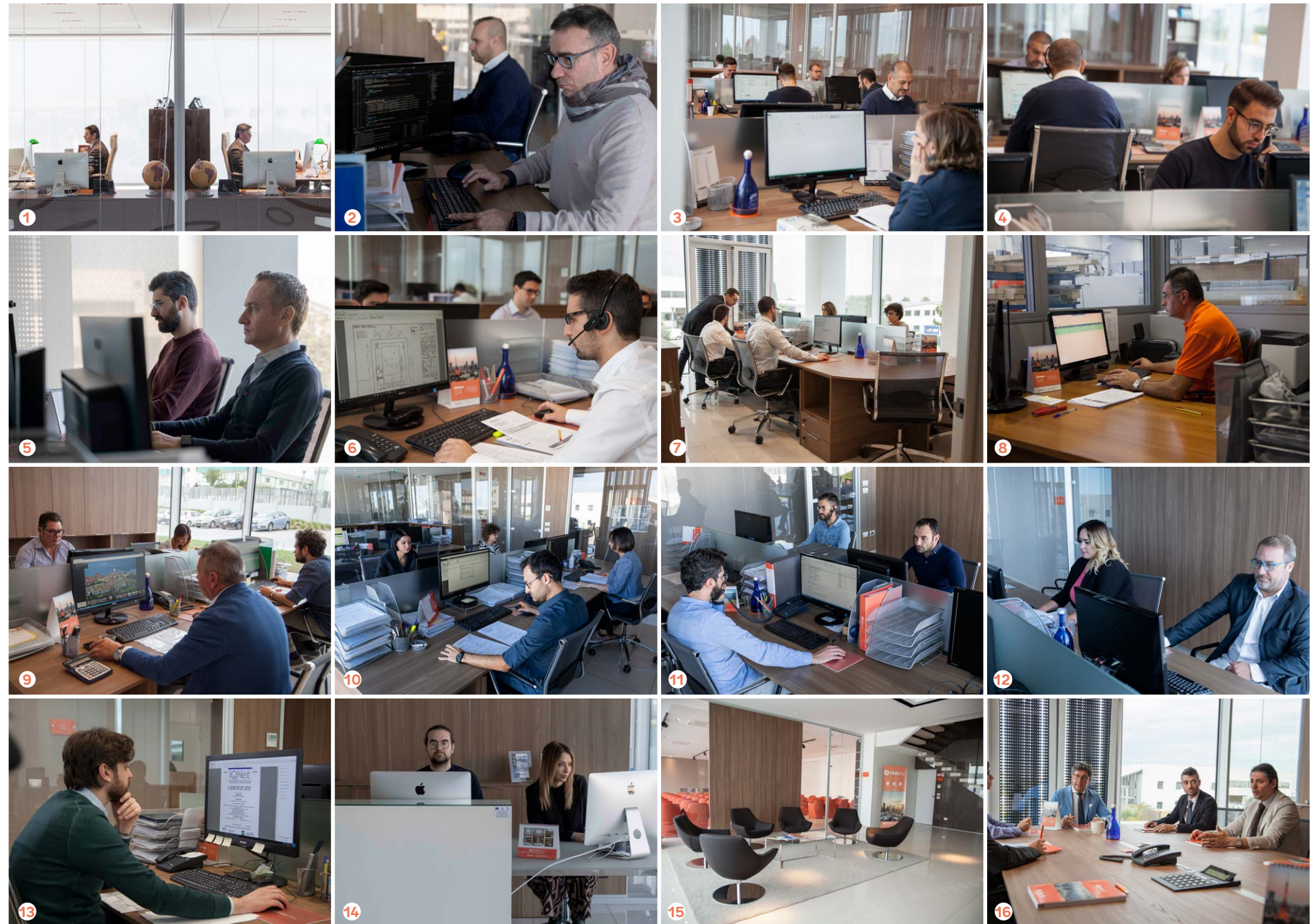
Today, CMAlifts operates and caters for lift companies in every region of the World. The recent expansion of the company's market, followed by a steady increase in the amount of business orders from abroad, has no doubt been the result of an ongoing participation at international trade shows. In addition to the Italian events of the past, such as, ITALIAELEVA and ANACAM Expo, there have been Lift Expo Italia in Milan, as well as international events, namely, the Interlift in

Augsburg, Batimatec in Algiers, Euro Lift in Kielce, The Elevator Show in Dubai, Liftex International in London, and Lift City Expo in Jeddah. CMAlifts is also at the head of an important partnership, CMA&Partners, a joint venture between Italian companies in the lift sector that aims to offer competitive Made-in-Italy solutions on the international market. Visiting our stand means exchanging and generating winning ideas with world-class professionals.



PEOPLE, OUR STRENGTH

The secret of our company's success lies in teamwork, where professionalism and modern solutions are mixed with the creativity of the individual workers. CMAlifts is an industrial-sized company that preserves an artisan heart, whose product is designed according to specific international requirements. The company is leader in the design, production, and assembly of complete custom-made elevator plants. The company has the most important certifications in the field of metal carpentry, management, safety at work and environment. CMAlifts' headquarters are situated in BARI - Corato, in Puglia, and house, as well as coordinate, various offices distributed in Italy and abroad. The headquarters are the administrative, productive, commercial, and logistic reference point of the company. Here, a team of professionals is constantly working to provide customers and suppliers all over the world with technical advice and solutions. The great expertise of our designers allows us to devise reliable, safe, and technologically advanced solutions of great aesthetic impact for any vertical transport request. The company's choices aim at professional growth by creating industrial trends and culture on a global level.



- | | | |
|---|--------------------------------|------------------------------|
| 1. co-C.E.O. (Co-Chief Executive Officer) | 7. Purchasing Dept. | 13. Management Systems Dept. |
| 2. DATA CENTER | 8. Production Manager's Office | 14. Reception |
| 3. Sales Dept. Italy | 9. Logistics Office | 15. Hall |
| 4. International Sales Dept. | 10. Administration Dept. | 16. Meeting Room |
| 5. Research & Development Dept. | 11. Certification Dept. | |
| 6. Technical Dept. | 12. Foreign Language Dept. | |

1. Procurement Dept.

2. Cutting section

3. Punching section

4. Bending section

5. Steel lift shaft structure assembly section

6. Car frame assembly section

7. Bracket machining section

8. Guide rail cutting section

9. Doorframes and door-leaf assembly section

10. Manual door assembly section

11. Lift car assembly section

12. Lift car roof and flooring assembly section

13. Painting section

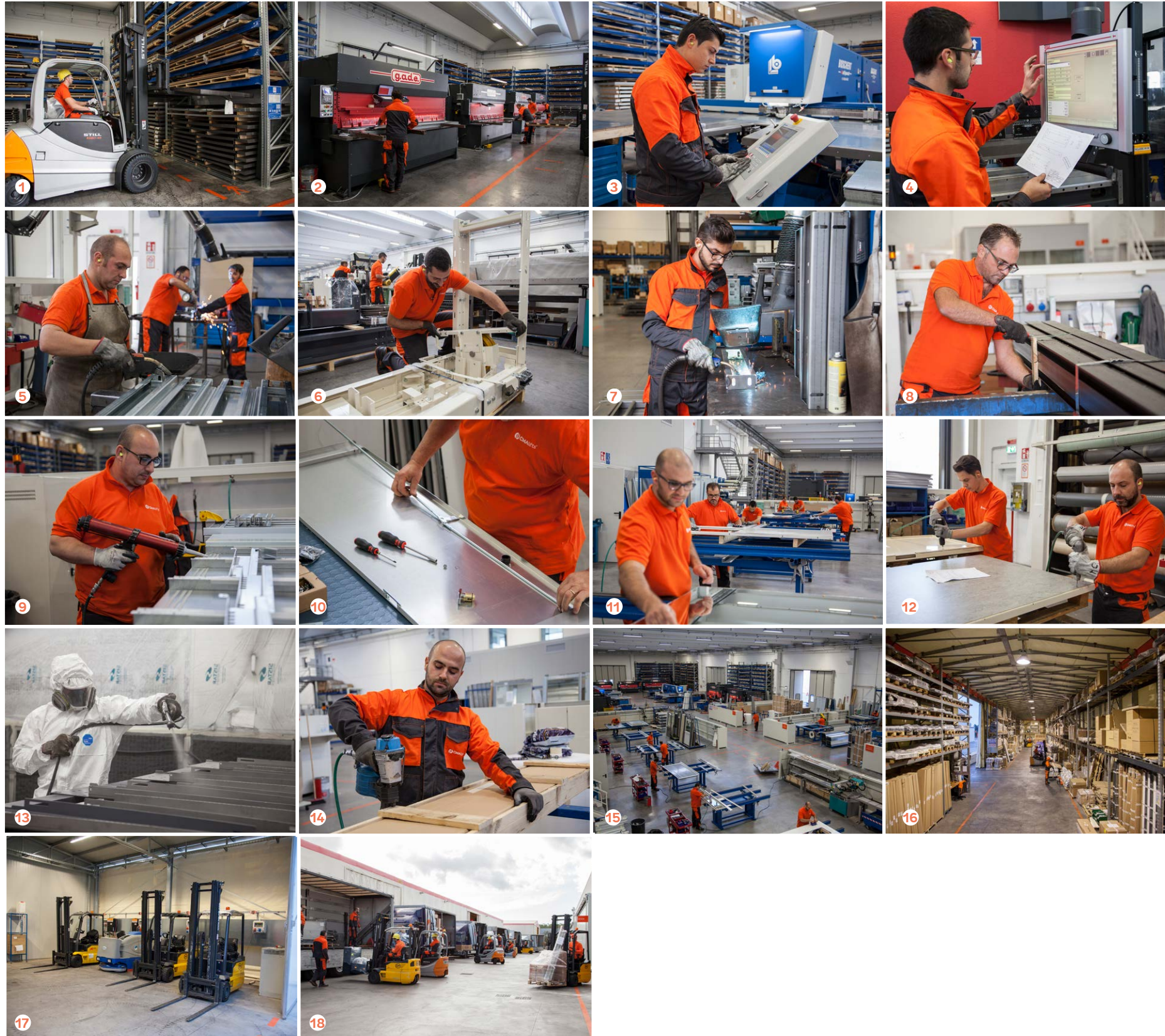
14. Packaging Dept.

15. Overview of Production Dept.

16. Finished product warehouse

17. Forklift recharging area

18. Loading/unloading area

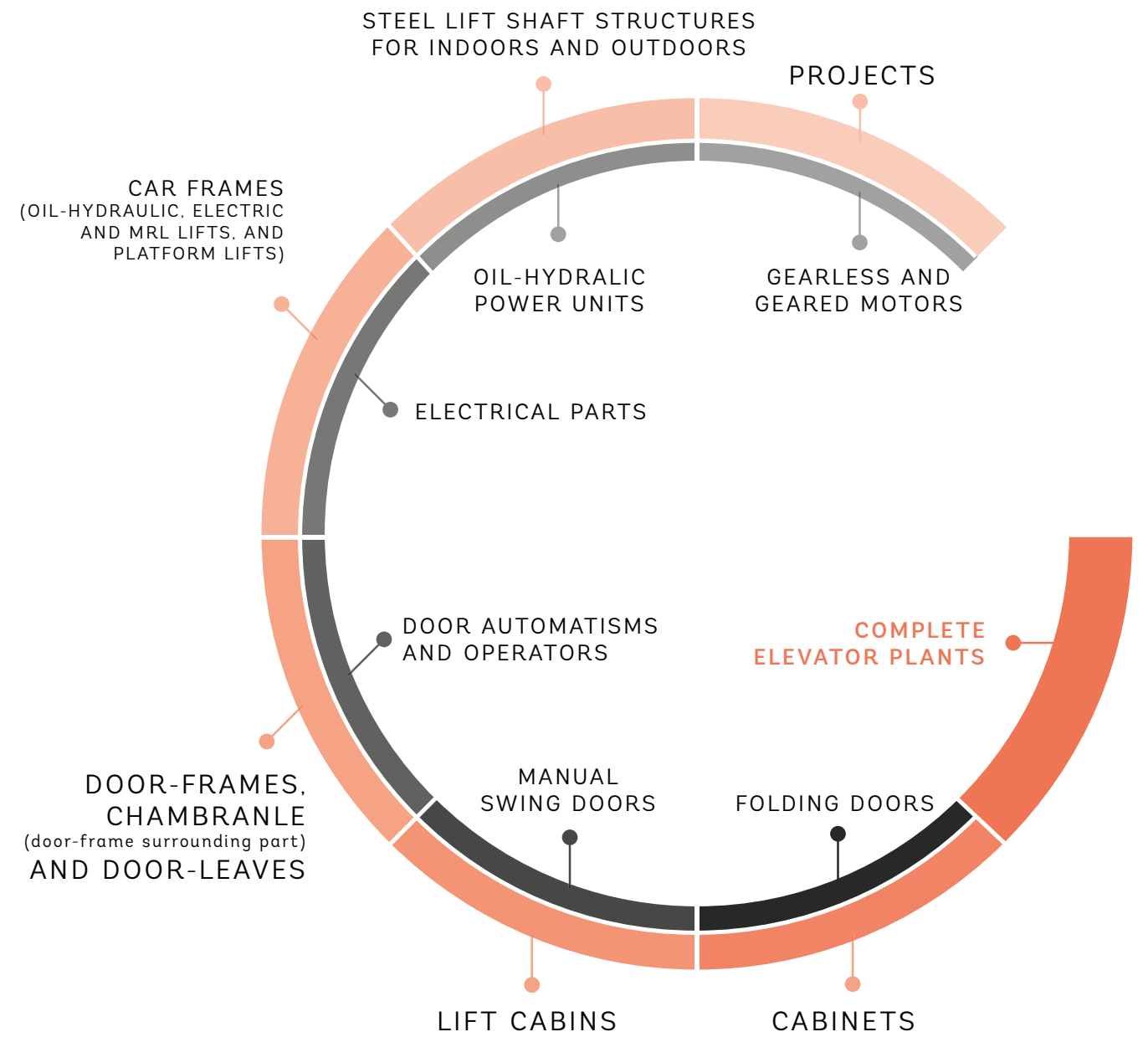


The production phase starts with product or system design and makes use of state-of-the-art 3D CAD software. The resulting design is sent into production where, with the aid of modern machinery close to the concepts of modern Industry 4.0, it becomes reality. At this point, the experience and skills of our craftsmen allow us to complete the realization of the product making it ready for delivery.

This way, we can realize from the most personalized residential elevator plant to the simplest standard lift plant, moving through more complex solutions, such as building renovations, or elevator installations specifically designed for manufacturing and/or business establishments.

CMAlifts PRODUCT RANGE

CMAlifts PRODUCT RANGE



 CMAlifts PRODUCTS
 PARTNERS PRODUCTS

CMAlifts elevator plants are the result of our own technical expertise, in conjunction with a long manufacturing and assembly experience, which allows us to offer reliable complete systems.



“New-Home” 4.0

Onwards into the future

CMAlifts' new home marks a real cutting-edge challenge proudly met by the company. The brand-new production plant built in BARI-Corato, in the region of Puglia, best expresses the goal CMAlifts had long set itself: to become Industry 4.0 ready.

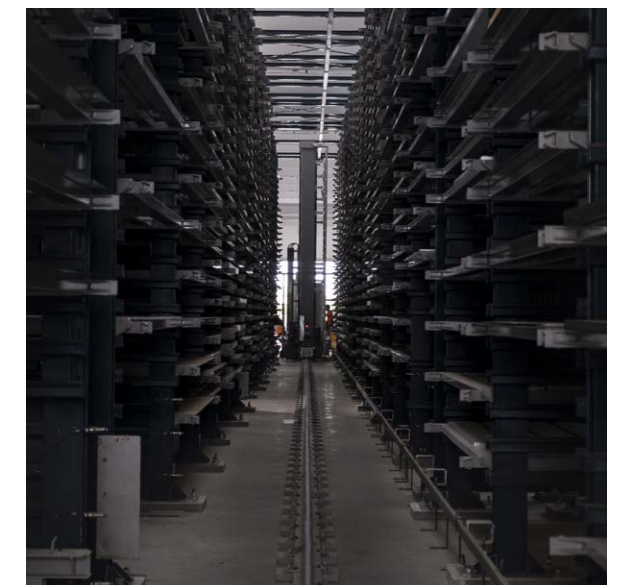
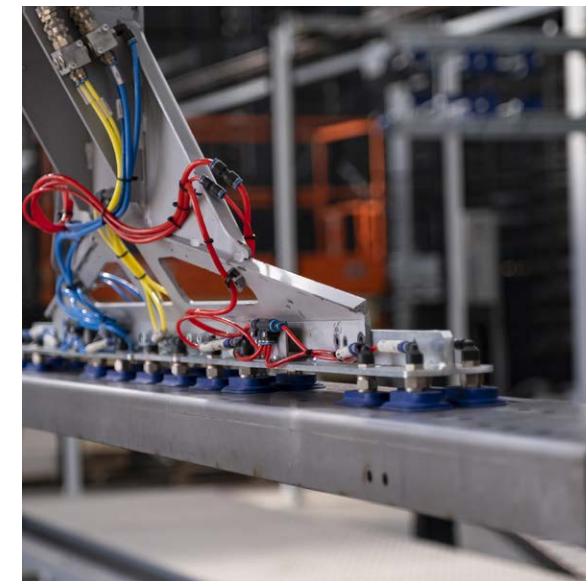
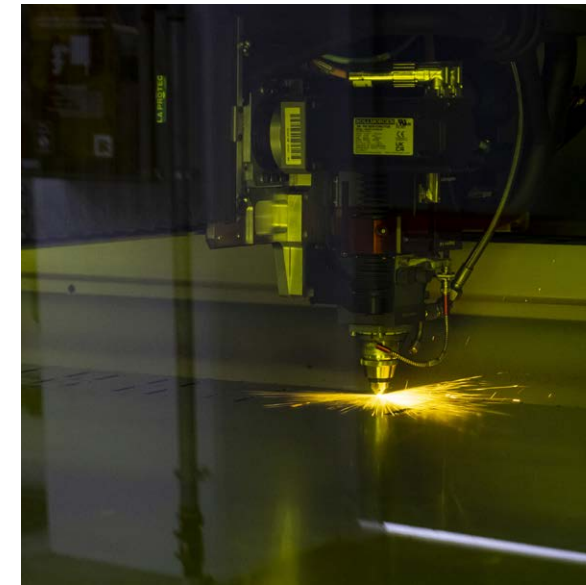
The backbone of the facility, designed and built by a well-known Italian company with considerable experience in the market for the supply of flexible systems for sheet metal processing, is undoubtedly the 32-level automatic vertical lift module double tower.

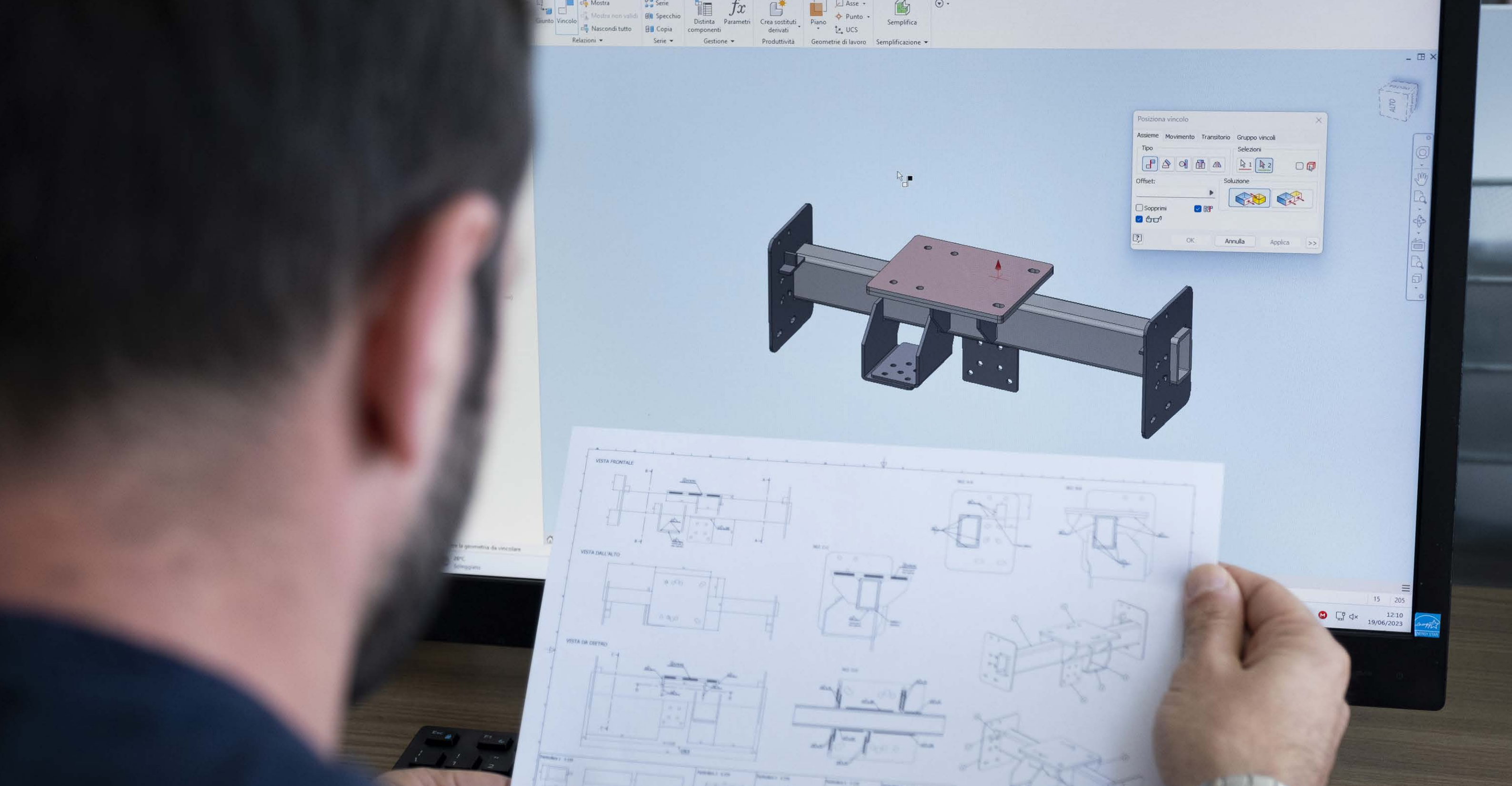
This brand-new facility allows the managing of multiple sheet formats, as well as the interconnecting of all different technologies, harmonising fibre laser cutting machines, punching- shearing centres, real 4.0 work-stations, and panel benders, one of which is entirely served by an ultra-modern anthropomorphic robot.

In addition to its state-of-the-art technology, CMAlifts' brand-new manufacturing plant allows the company to work with great flexibility and productivity, as well as manage kit or batch production.

CMAlifts has always had the environment and the green world at heart. As a result, the company has installed photovoltaic panels that cover 70% of its annual energy requirement.

Furthermore, having invested in machinery that boasts an average OEE of over 80% and individual machine productivity of over 90%, CMAlifts aims to further improve its environmental and quality targets. The use of all these high-quality and energy-efficient elements is more and more strengthening CMAlifts' Made-in-Italy status in the world.





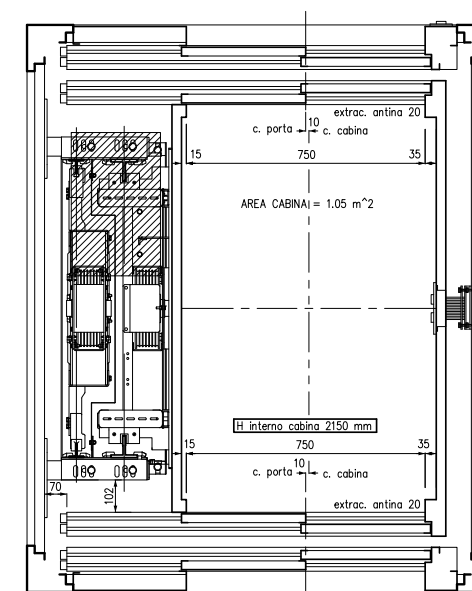
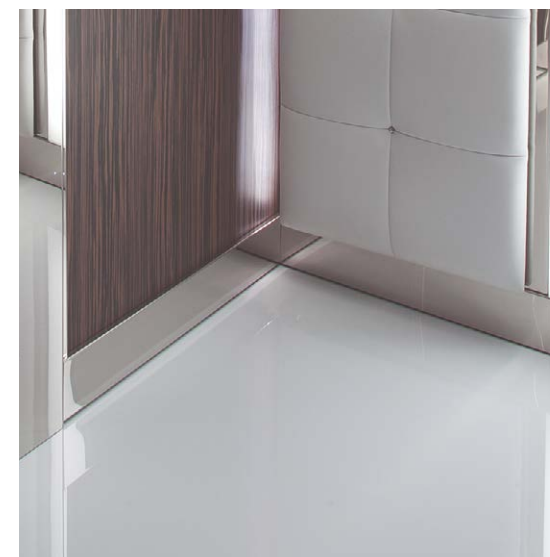
THE STRATEGY OF TEAMWORK

The work strategy implemented within CMAlifts is based on the principle that teamwork, aimed at achieving company's objectives, is of benefit to every single professional, because we believe that teamwork is the fuel that enables a company to achieve extraordinary results.

PRODUCTS, CREATIONS

CMAlifts designs, manufactures, and assembles lifts, platform lifts and elevators for civil and industrial use. More specifically, it deals with the design and production of metal lift shaft structures and mechanical frames, lift cars, as well as the assembly of complete plants, entirely tailor-made with a wide range of materials, finishes and colours chosen by the customer. One of the strong points of our company is the high customization of the products we offer.

The company, in line with current work and health regulations, uses only materials and components that comply with European directives, coming from certified suppliers.





INDOOR AND OUTDOOR STEEL LIFT SHAFT STRUCTURES

CMAlifts offers:

Steel shaft structures for lifts conforming to current standards, also in the slim version for small spaces; also suitable for buildings of historic and artistic value.

The frameworks are made of sheet steel or hot-dip galvanised sheet steel and are available for indoor and outdoor use, as well as for installation in challenging environments, such as coastal areas, and painted in RAL or micaceous iron colours.

Infill realised in:

- VARNISHED STEEL SHEET
- PLASTIC-COATED STEEL SHEET
- INOX STEEL
- INSULATING PANELS
- GLASS (clear, bronze, Fumé, milk, STOPSOL and/or other, subject to availability)



PRODUCT LIST

- **Steel lift shaft structures for interior and exterior use (RAL, INOX)**
 - Standard, Slim for space saving, with external glass or binding screws.
 - Infill realised in painted steel sheet, skin-plate (plastic-coated sheet), stainless steel sheet, insulation panelling, glass or upon request.
- **Oil-hydraulic lifts EN 81-2 – EN 81-20/50**
 - *Rucksack type, rated load capacity up to 2400 Kg.*
Plant types: central direct-acting; side direct-acting; indirect acting 2:1
- **Electric lifts with machine room EN 81-1 – EN 81-20/50**
 - *Sling car frame, with a rated load capacity up to 2000 Kg and rated speed up to 2.5m/s.*
Plant types: direct acting; indirect acting 2:1 with upward/downward diverter pulley; motor support supply.
- **MRL Traditional Electric lifts EN 81-1 – EN 81-20/50**
 - Direct acting, rucksack frame **Pegaso NARROW with 440 mm D.B.G.** (rated load capacity up to 320 kg and rated speed of 1m/s).
 - Direct acting, rucksack frame **Pegaso 1:1** (rated load capacity up to 630 kg and rated speed of 1m/s).
 - Indirect acting, rucksack frame **Pegaso 2:1** (rated load capacity up to 1600 kg and rated speed of 1m/s).
 - Indirect acting, sling frame **Pegaso DUE** (rated load capacity up to 2000 kg and rated speed of 2m/s).
 - Indirect acting, sling frame **Pegaso DUE** (rated load capacity up to 2500 kg and rated speed of 1.6m/s).
- **EN 81-21 reduced pit, reduced headroom elevator plants**
 - **Oil-hydraulic lifts:** minimum pit of 200*mm, minimum headroom of 2400*mm (rated load capacity up to 2000 Kg).
 - **Electric lifts with machine room:** minimum pit of 350*mm.
 - **MRL electric lifts:** minimum pit of 250*mm, minimum headroom of 2400*mm and rated load capacity up to 1250 kg.
- **Machinery Directive home-lifts 2006/42 EC**
 - **Mercury:** hydraulic homelift (rated load capacity up to 1000 kg and rated speed of 0.15 m/s for EC plants; 0.30 m/s for non-EC plants).
 - **FEBO:** MRL electric homelift (rated load capacity up to 500 Kg and approx. 0.5 KW, as well as rated speed of 0.15 m/s for EC plants; 0.3 m/s for non-EC plants).
- **Refurbishment kit**
 - **Kit Simplex:** designed for the refurbishment of old electric lifts.
 - **“Cabina Piuma”:** a lightweight cabin, with panels in aluminium measuring 800 x 1200 mm, complete with door. Total weight: 160 Kg.
- **Space saving lifts for narrow hoist-ways**
 - **“Ponte Oleo”** hydraulic lift with a shaft structure outer dimensions of 770 mm.
 - **“Ponte Elettrico MRL”** electric lift with shaft structure outer dimensions of 760 mm.
 - **Oil-hydraulic “400 mm D.B.G.”**, for hoist-ways with shaft structure outer dimensions of 660 mm.
 - **“MRL Pegaso Narrow”**, for hoist-ways with shaft structure outer dimensions of 690 mm.
 - **“MRL Pegaso Ultraslim”** lift with car frame dimensions of 235 mm.
 - **“FTR1 Slim”** oil-hydraulic lift with car frame size of 180 mm.
- **Special lift plants**
 - **Panoramic lifts**
 - **Lifts for the food sector** (AISI 316L steel)
 - **Lifts for applications in public transport facilities** (underground, subways, train stations)
 - **Fire-resistant and rescue lifts** (Italian M.D. 15/09/2005)
 - **Fire-resistant lifts** (EN 81-72)
 - **Vandal-resistant elevators** (EN 81-71)

*Cabins: standard - tailor-made - panoramic - special shape (upon request) and lightweight.
Landing doors, door-frames and chambranle (windowless, coated, framed glass and full glass).*

* The minimum height measurements vary according to plant design specifications (lift plant type, rated speed and load capacity).

N.B.: The above lift plants are our standard range of products. For specific demands, CMALifts shall assess relevant project feasibility.
N.B.: All lift plants can be realized according to EN 81-70 – Italian M.D. 236/89 (Law n. 13), with 230V single-phase power supply.

**TAILOR-MADE
QUALITY**
100% MADE IN ITALY



 CMAlifts®



YOU CAN RELY ON CMAlifts FOR
YOUR BESPOKE ELEVATOR

MANUFACTURING

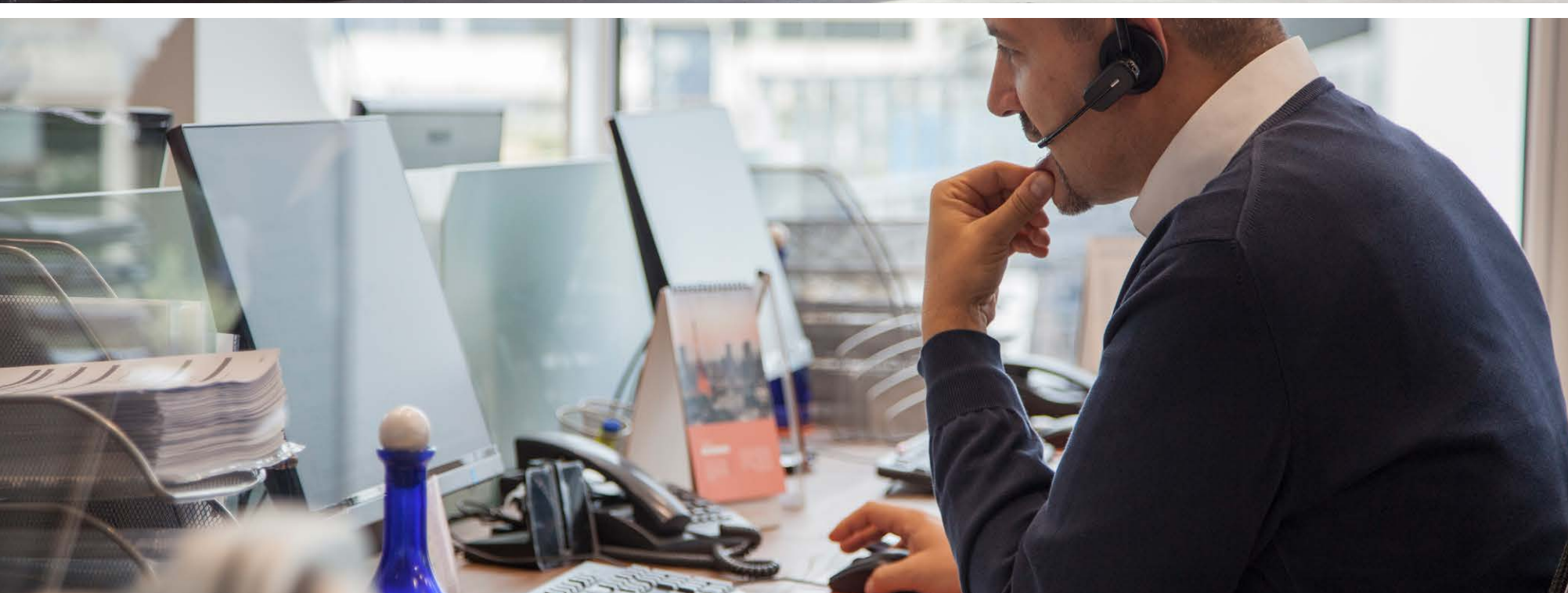
Innovation, at CMAlifts, is driven by a corporate vision in which customer specifications, the skills of the Technical Department, the creativity of the workers and compliance with sector regulations, are all combined to guarantee products of high quality and reliability in full respect of the environment. All this is perfectly integrated in a wider policy of environmental sustainability in which CMAlifts uses solar panels and latest generation machinery, operating in full compliance with policies to safeguard health and safety at work.

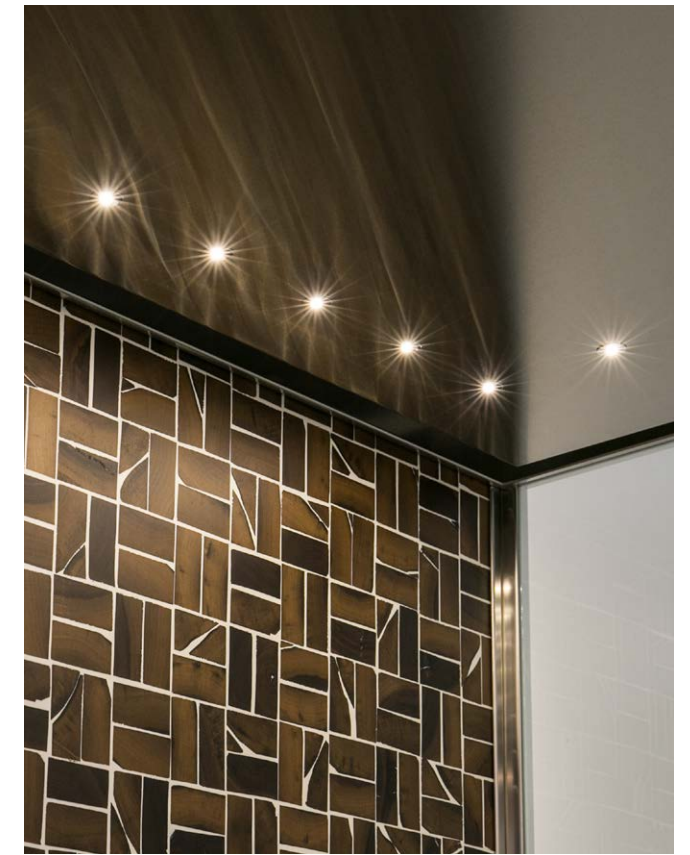
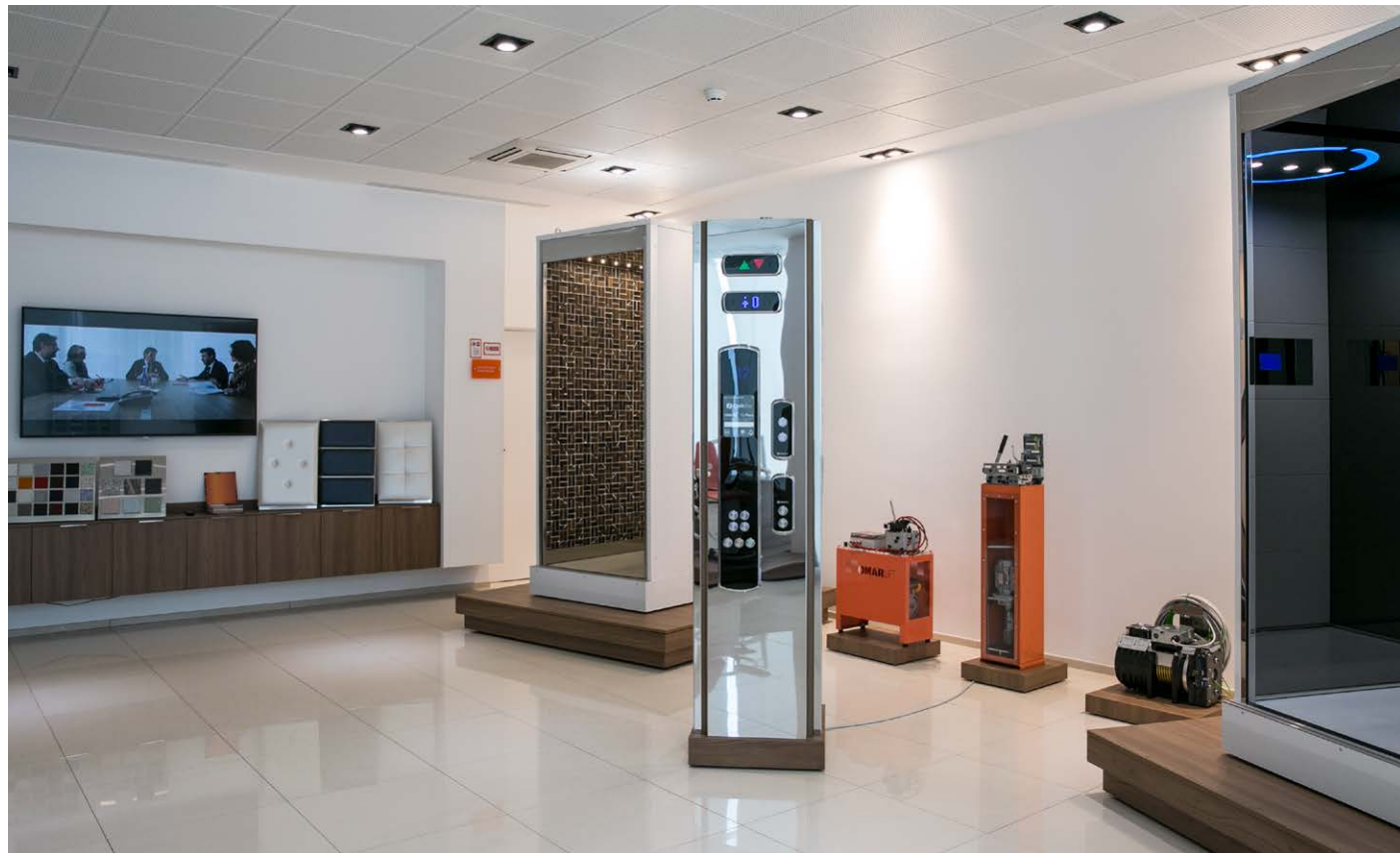
LOGISTICS

In addition to the phases of design, production and assembly, logistics plays a key role, at CMAlifts, in ensuring that the goods are delivered on time and accurately at worldwide level. CMAlifts has a fleet of articulated vehicles, trucks and lorries equipped with hydraulic tail lifts. CMAlifts' integrated logistics system starts with the procurement of raw materials and ends with the onsite delivery of the complete elevator plant.

CUSTOMER CARE

Our customers can rely on an efficient customer-care service which uses a modern C.R.M., Customer Relationship Management. In addition, CMAlifts offers its customers, through accessing the reserved area on www.cmalifts.com, the possibility to monitor the progress of orders, download certificates, projects, and technical reports, as to elevator plants and lift shaft structures.





DATA CENTER

CMAlifts has always paid great attention to the computerization and automation of company processes, therefore, it has an in-house DATA CENTER, C.E.D., that comprises I.T. experts who are responsible for the implementation and maintenance of hardware and software systems. The management of production activities, at CMAlifts, takes place through a latest-generation E.R.P., Enterprise Resource Planning, system capable of better coordinating the procurement, production, and delivery phases. Finally, C.E.D. also takes care of the www.cmalifts.com web portal, updating contents related to products, services, and news.





OUR SOLIDARITY

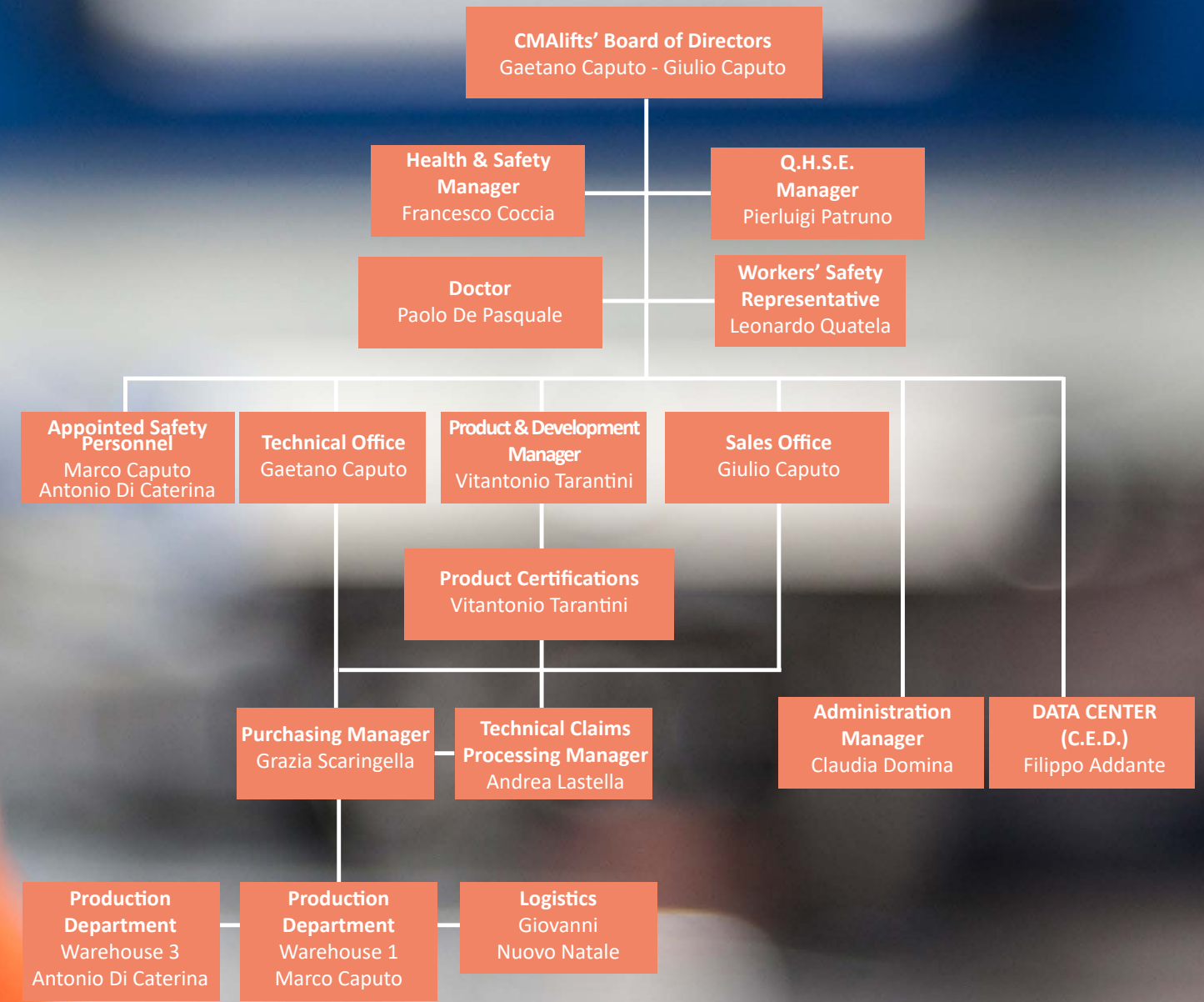
SOCIAL, SPORT

CMAlifts is committed to supporting humanitarian projects, aimed at giving smiles back to the members of **Gocce nell'Oceano (Drops in the Ocean)**, an association constituted by people with disabilities. CMAlifts firmly believes in the educational value of sport, especially for young people, and is proud to sponsor the sports

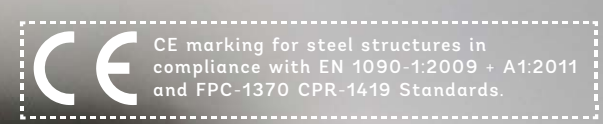
associations **Karate Ryugi, The Den of Tigers, ASD Basketball Ruvo di Puglia and U.S.D. Corato Calcio 1946 A.S.D.** Moreover, CMAlifts has joined the **World Community Grid project**, supporting scientific research through the provision of its unused computing resources, in order to sustain projects related to humanitarian, health, and environmental issues.



RESPONSIBILITIES, CERTIFICATIONS
ORGANISATIONAL STRUCTURE



CMAlifts is an ISO 9001, ISO 14001, and ISO 45001 certified company, with CE marking for metal structures according to EN 1090-1 + A1 with FPC 1370-CPR-1419 regulations.





Gaetano Caputo
n.caputo@CMAlifts.com

Giulio Caputo
g.caputo@CMAlifts.com

Administration Dept.
amministrazione@CMAlifts.com

Certifications
certificazioni@CMAlifts.com

Technical Office
tecnico@CMAlifts.com

Production Office
produzione@CMAlifts.com

Product Development Office
progettazione@CMAlifts.com

Logistics
logistica@CMAlifts.com

Purchasing Dept.
acquisti@CMAlifts.com

Quotation/order submission
quotation@CMAlifts.com

Data Center
informatico@CMAlifts.com

info@CMAlifts.com

Members





C.M.A. S.r.l.
S.P. 238 Km 11,728 - 70033 Corato (BA) - Italy
TEL. +39 080.3588714 - FAX + 39 080.8729113
INFO@CMALIFTS.COM - INFO@PEC.CMALIFTS.COM
CMALIFTS.COM